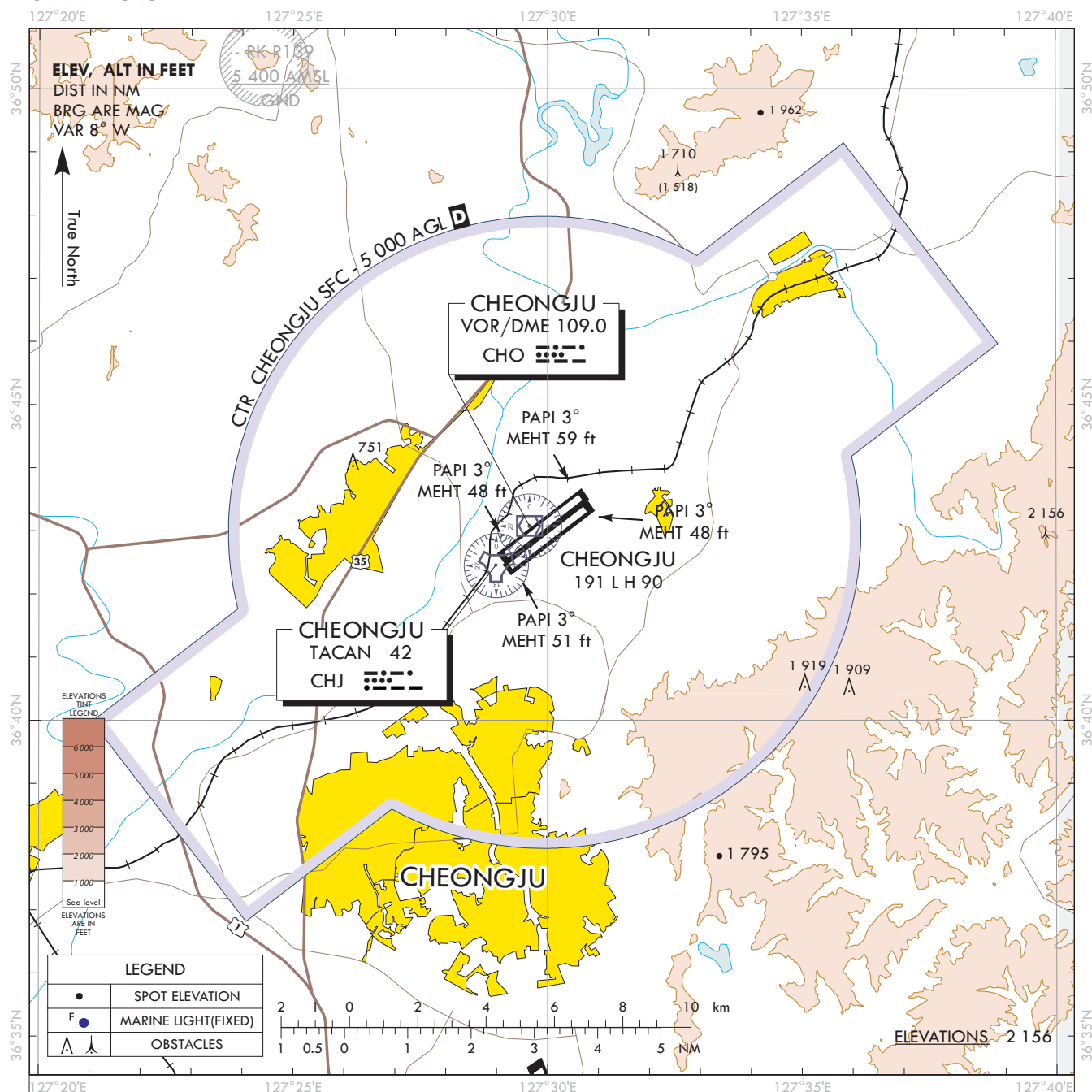


**VISUAL
APPROACH
CHART - ICAO**

AD ELEV **192** ft
HEIGHTS RELATED
TO AD ELEV

JUNGWON	APP	134.0
CHEONGJU	DEP	129.65
CHEONGJU	TWR	118.7 126.2

CHEONGJU/Cheongju



ATS Airspace Classifications

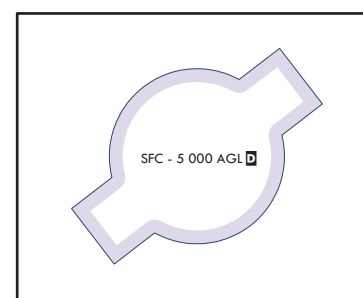
1. Class D : Radius of Cheongju airports

* Vertical Limits

- Within 5 NM including areas which are extended southwestbound from
364004N 1272052E - 364151N 1272344E -
363841N 1272646E - 363654N 1272354E
and northeastbound from
364727N 1273246E - 364914N 1273539E -
364603N 1273841E - 364416N 1273548E (SFC-5 000 ft)

* Speed Limits : 250 kts IAS or less below 10 000 ft AMSL

200 kts IAS or less at or below 2 500 ft AMSL within 4 NM of the airport.



Change : Page control.

OFFICE OF CIVIL AVIATION

AIRAC AIP AMDT 3/24
Effective : 1600UTC 15 MAY 2024